

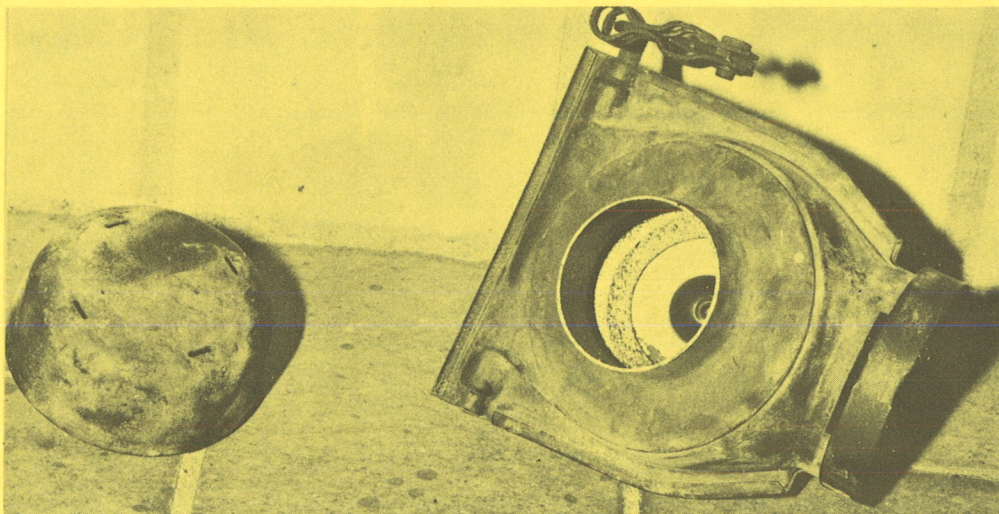
## PRODUCT INFORMATION CIRCULAR

VAPOR LOCK - FUEL PUMP, FUEL LINES  
Parts Identifier 213 01/06/10

October 6, 1973

Temperature built-up around the fuel supply pump and fuel lines can result in vapor lock conditions. This can be remedied with the following modifications:

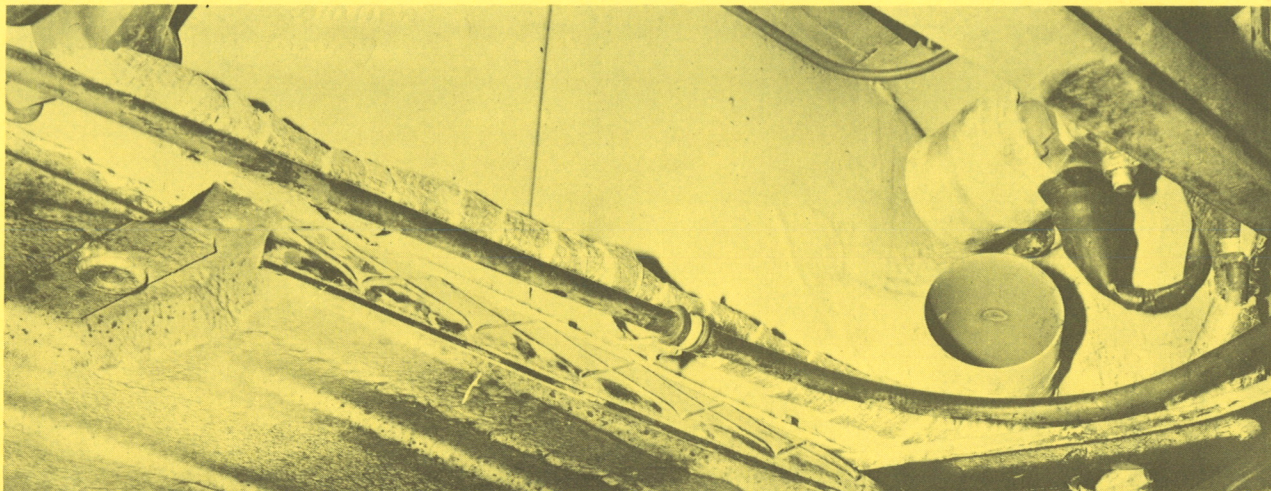
1. Remove right side of heater control box (as shown in picture # 1)
2. Remove dust cover of heater control box (as shown in picture # 1)





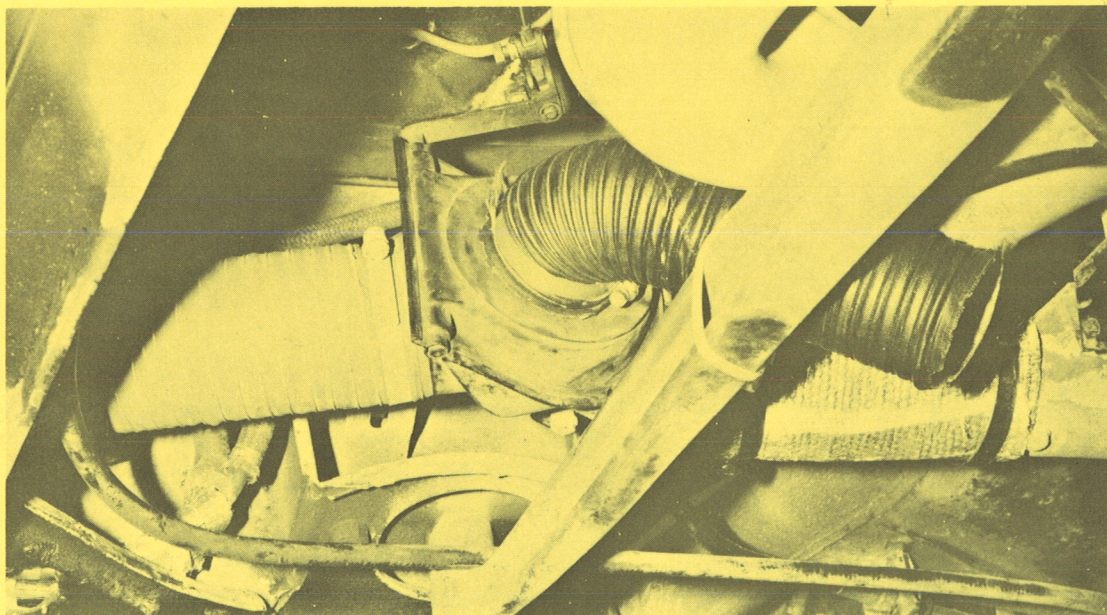
## PRODUCT INFORMATION CIRCULAR

3. Insulate (wrap) fuel lines which are located in front of the engine (as shown in picture # 2).



Note: Insulation material (asbestos cloth) should be obtained locally.

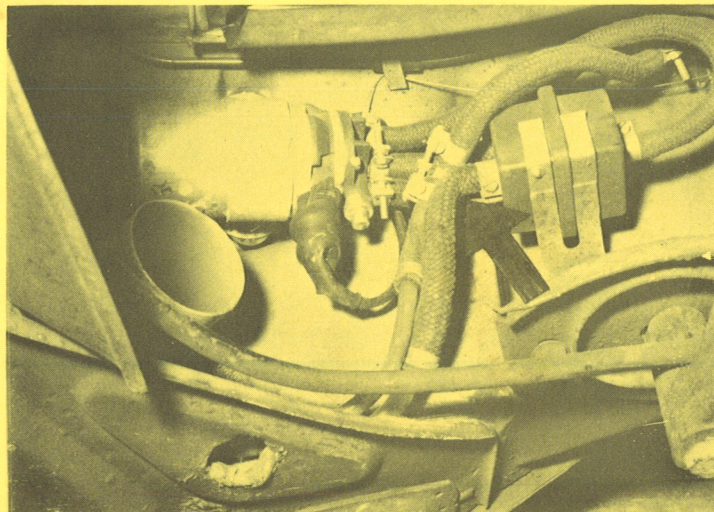
4. Re-install heater control box (without dust cover).
5. In place of the dust cover, install a heater hose of approximately 12 to 14 inches in length (as shown in picture # 3).





## PRODUCT INFORMATION CIRCULAR

6. Secure heater hose with a hose clamp to the heater control valve and route the open end towards the rear of vehicle.
7. Replace fuel hose to fuel filter with a 20 mm longer hose to eliminate a sharp kink (as shown in picture # 4).



In addition, the ring fuel line inside the engine compartment can be subject to excessive heat if it touches the crank case. It is therefore suggested, to route the ring line above the vacuum hose and crank case breather hose (as shown in pict. # 5).

